



DECORATIVE WALL PANEL

FOSHAN WALTON BUILDING MATERIALS

WVA





ENTERPRISE PROFILE

Established in 2008, Foshan Walton Building Materials Co., Ltd. is a professional supplier, with its products exported to dozens of countries and regions in the world.

Over 10 years, Walton has become a reputable and popular enterprise in ceramic tile and wall panel exporting industry, and established a global ceramic tile supply network together with its long-term customers.





安装便捷

CONVENIENT AND QUICK
INSTALLATION



防水防潮

WATER AND
RESISTANCE



防火阻燃

FIRE AND FLAME RETARDANT



耐刮耐脏易清洁

SCRATCH-RESISTANT AND
EASY CLEAN



隔音节能

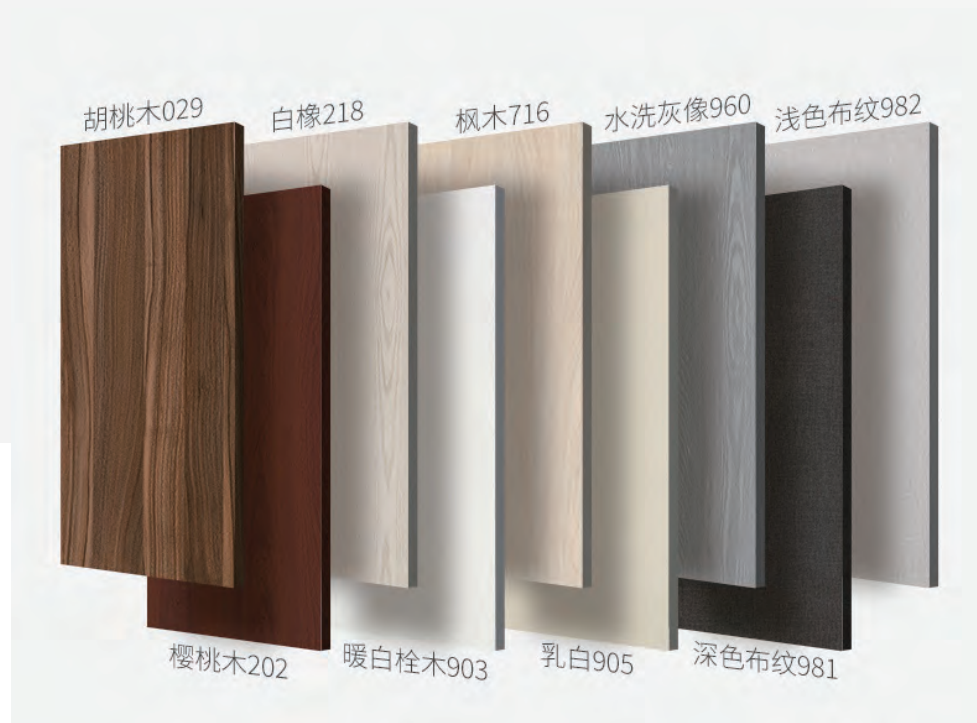
SOUND INSULATION



健康环保

HEALTH AND ENVIRONMENTAL
PROTECTION

6 大优势 碳晶墙板 INTEGRATED WALLBOARD





PVC WOOD VEENER

木饰面板



PRODUCT CHARACTERISTIC

产品特性

天然竹粉+树脂粉 为主要原材料高温混合挤压而成

具有防水、阻燃、防虫、防霉、易清洗、安装快等优点。所有产品均使用德国进口热覆膜机，采用德国进口PUR热熔胶，更加环保。

粘合层

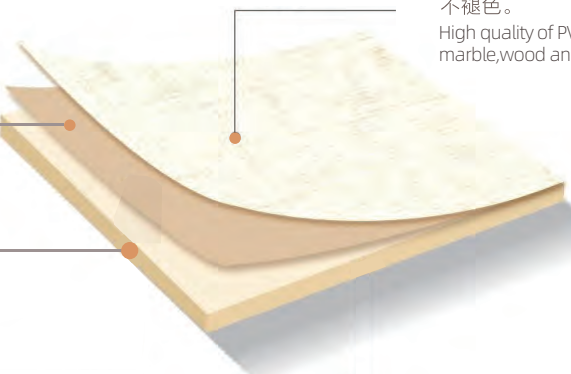
采用德国进口PUR热熔胶

The layer is stuck by PUR melt environmentally

基材层

天然竹粉+树脂粉
高温混合挤压

The base is made of pvc and calcium carbonate



覆膜层

高品质PVC覆膜，纹理真实
防刮耐磨，防水防潮，不褪色。

High quality of PVC layer of marble, wood and textile



科学配色

设计师推荐色 多色可选



简易安装

当天安装 即可入住



耐脏易打理

轻松擦拭 不怕刮痕破坏



防霉防潮

水性膜包裹 一擦即净



环保免涂漆

无甲醛 无异味



质量保障

儿童 孕妇适合居住

CARBON CRYSTALLIC WALL PANELS

双面共挤碳晶板

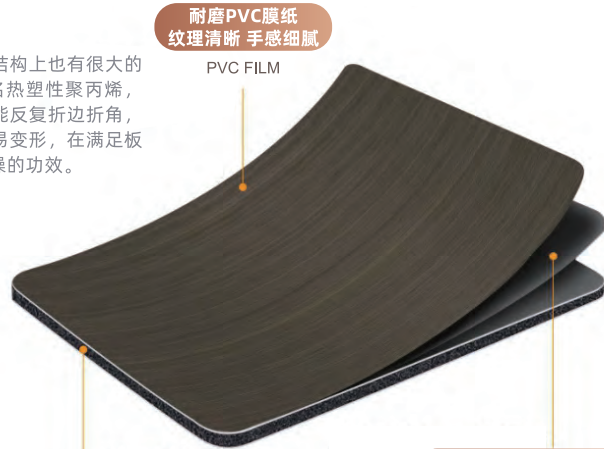


PRODUCT CHARACTERISTIC

产品特性

升级版碳晶纤维实芯大板

在继承竹木纤维木饰面的优点以外，在其结构上也有很大的优化，首先是表面有两层PP共挤层，学名热塑性聚丙烯，它能使板材表面更耐撞击，同时能在施工中反复折边折角，不易破损，加上中间是多孔蜂窝结构，不易变形，在满足板材轻量化的同时，还增加了一定的隔音降噪的功效。



高密度基材
抗压 不易变形
HIGH-DENSITY
BASE MATERIAL

粘合层 进口PUR热熔胶
绿色环保 无异味
ENVIRONMENTALLY
FRIENDLY HOT MELT
ADHESIVE



活性炭粉配方
分解甲醛等有害气体



板材拱挤工艺
硬度再强化不惧碰撞

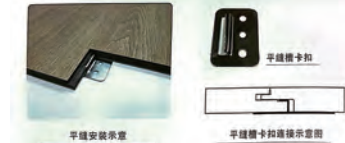


多种拼接方式
不只是金属线条拼接

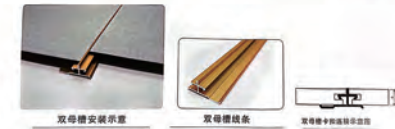


材质细密
表面材质精致细腻

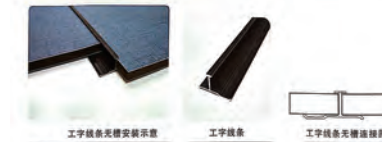
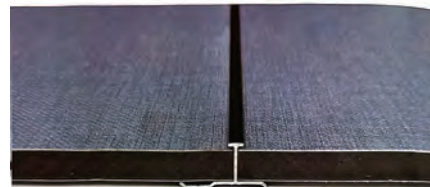
装配安装方式① 平缝式 FLAT SEAM



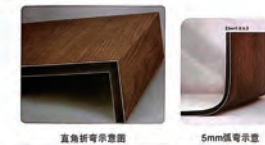
装配安装方式② 双母槽式 DOUBLE SLOT



装配安装方式③ 工字条无槽式 I-SHAPE



装配安装方式④ 折弯方式 BENDING MODE



FLUTED WALL PANEL

格栅板

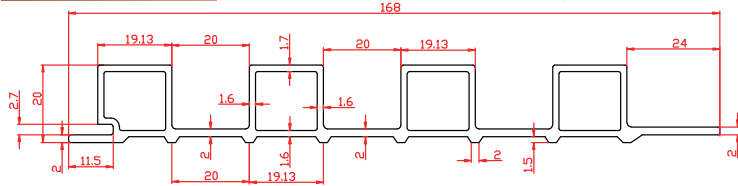


Plate Structure diagram

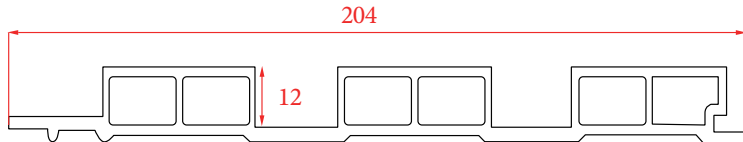
板材结构图

W168X20格栅

截面积: 679mm² 理论重量: 750g/m

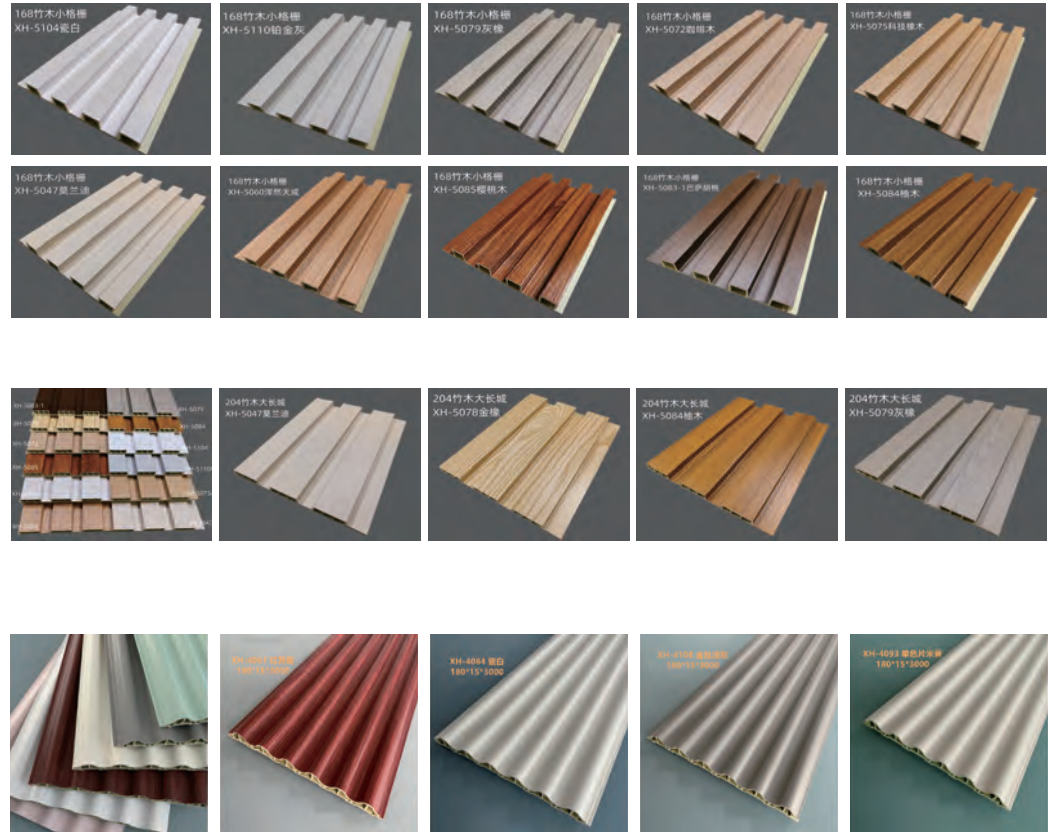
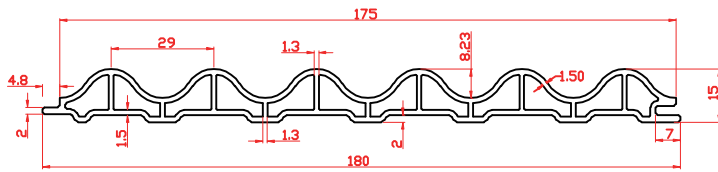


W204X12格栅



W175X15格栅

截面积: 725mm² 理论重量: 800g/m



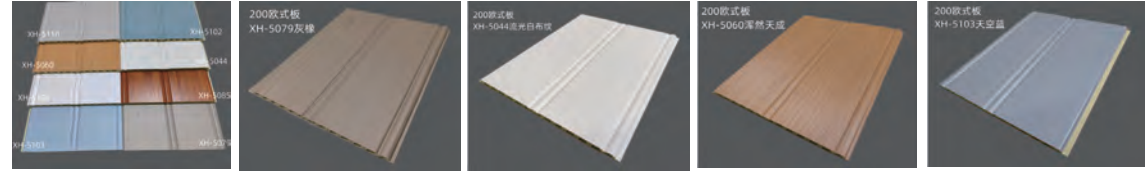
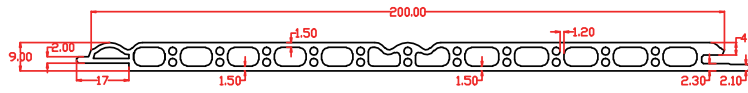
FLUTED WALL PANEL

格栅板



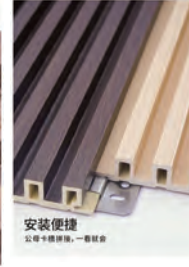
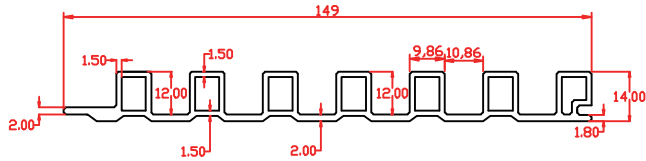
W200X9格栅

截面积: 920mm² 理论重量: 1012g/m



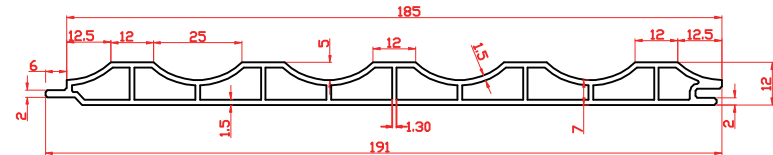
W149X14格栅

截面积: 611mm² 理论重量: 672g/m



W185X12格栅

截面积: 696mm² 理论重量: 766g/m



METAL SERIES

Resistant to dirt and scratch

金属膜系列

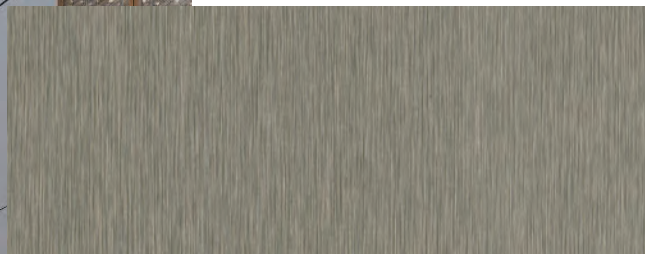
品质至甄·匠心营造

Perfect Quality
And Craftsmanship

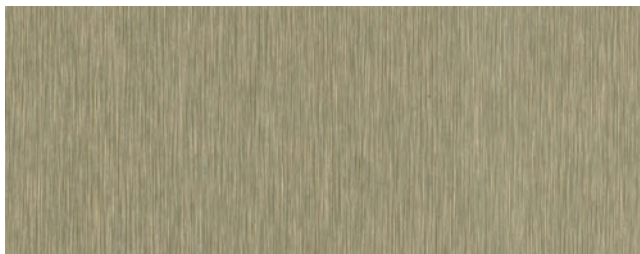
The above image is for illustrational purpose only, and the real product may be different.

图片效果仅供参考，颜色请以实物为准

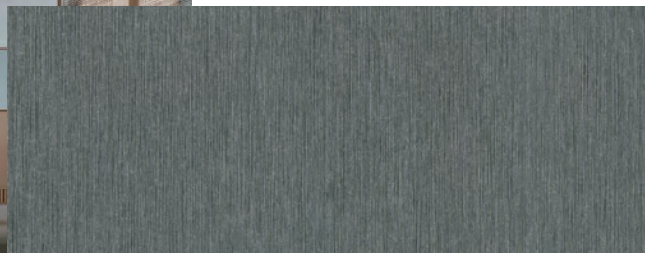
DECORATIVE FILM | HIGH-END SERIES



RFH53012



RFH53015



RFH53013



RFH53016



RFH53014



RFH53017



RFH53018



RFH53019



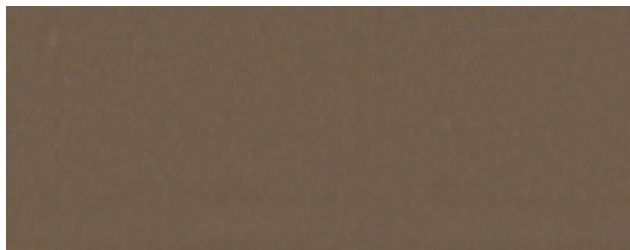
RFH53020



RFH53021



RFH53022



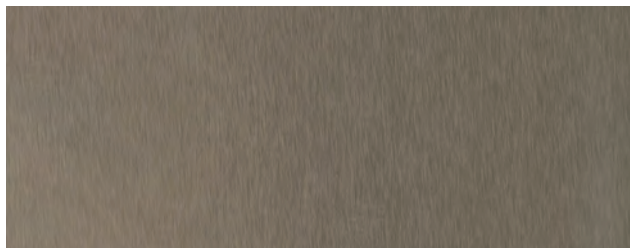
RFH53025



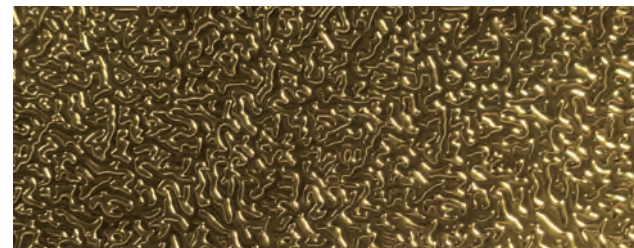
RFH53028



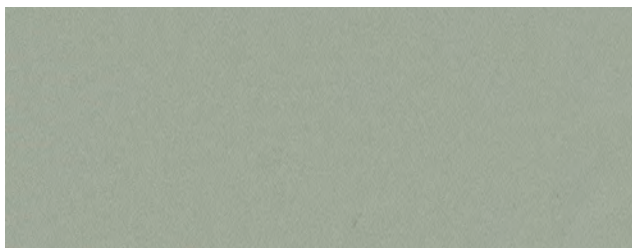
RFH53023



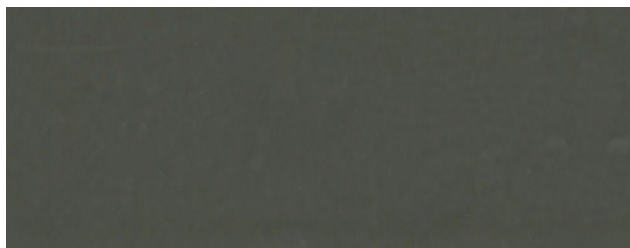
RFH53026



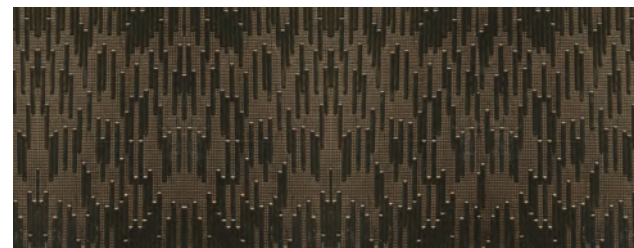
RFH53029



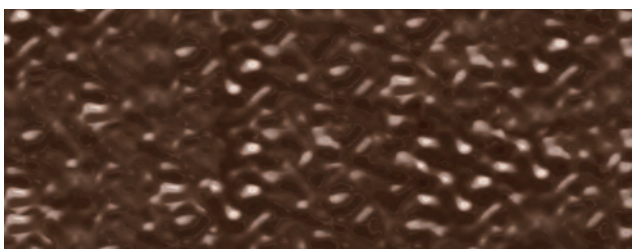
RFH53024



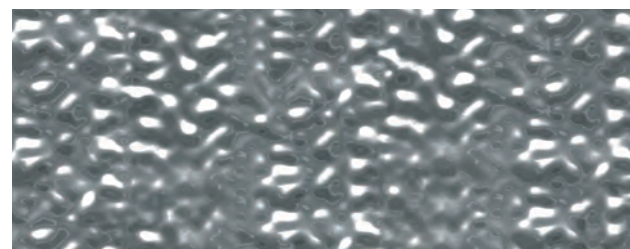
RFH53027



RFH53030



RFH53032



RFH53033



RFH53031

DECORATIVE FILM | HIGH-END SERIES

以极简的设计演绎着
最本质的高定美学

The above image is for illustrational purpose only, and the real product may be different.

图片效果仅供参考，颜色请以实物为准

02

CROSS CLOTH BASE SERIES

布纹系列

且让空间在呈现极简的同时
以细腻的触感丰富了空间层次

Enriched
The Space
Level.

The above image is for illustrational purpose only,
and the real product may be different.

图片效果仅供参考，颜色请以实物为准

布纹系列 04
RFH53061

布纹系列 05
RFH53062

布纹系列 06
RFH53063

布纹系列 07
RFH53064



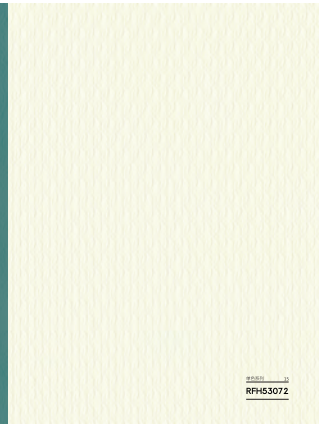
RFH53069



RFH53070



RFH53071



RFH53072



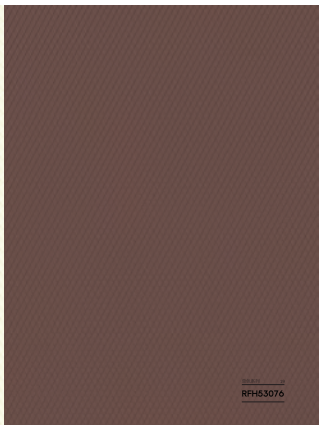
RFH53073



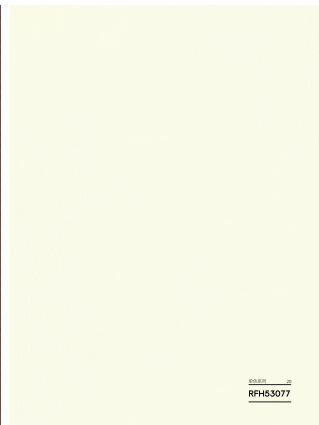
RFH53074



RFH53075



RFH53076



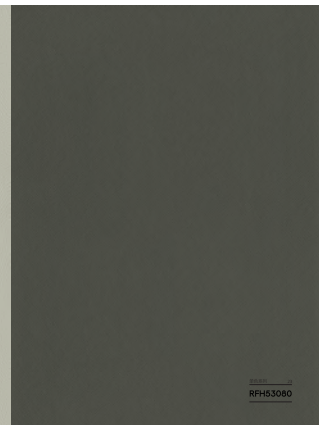
RFH53077



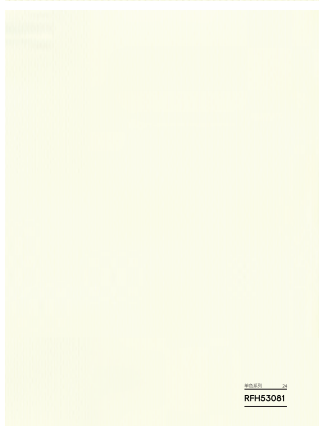
RFH53078



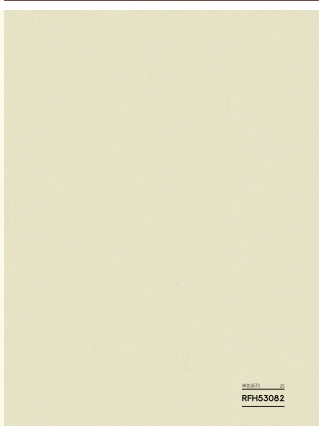
RFH53079



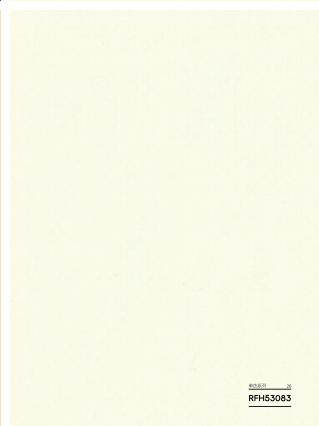
RFH53080



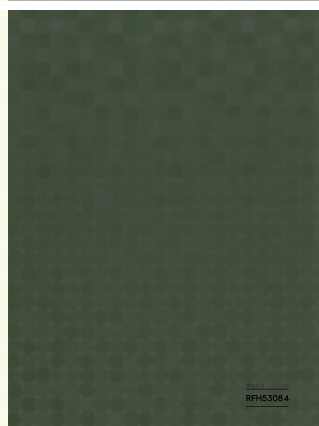
RFH53081



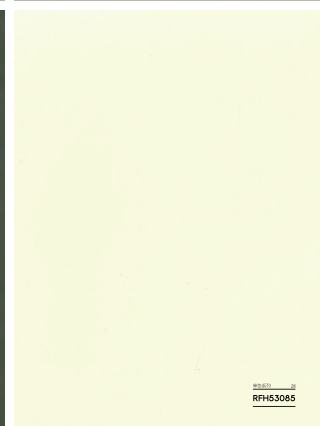
RFH53082



RFH53083



RFH53084



RFH53085



RFH53086

03

Resistant to dirt and scratch

木纹（耐污耐刮）系列

颜色淡雅线条流畅、简洁

独具现代时尚生活气质

Perfect Quality
Smooth And Concise Lines Unique Modern
And Fashionable Life Temperament

WOOD SERIES

The above image is for illustrational purpose only, and the real product may be different.

图片效果仅供参考，颜色请以实物为准





木纹系列 54
RFH53111

木纹系列 55
RFH53112

木纹系列 56
RFH53113

木纹系列 57
RFH53114

CONTRAST THE OVERALL



木纹系列 38
RFH53095

木纹系列 39
RFH53096

The above image is for illustrational purpose only,
and the real product may be different.

图片效果仅供参考，颜色请以实物为准

木纹系列 46
RFH53103

木纹系列 56
RFH53104



ENVIRONMENT PROTECTION

PURSUE NATURE IN PROSPERITY

The above image is for illustrational purpose only, and the real product may be different.

图片效果仅供参考，颜色请以实物为准

木纹系列 40
RFH53097

木纹系列 41
RFH53098

木纹系列 48
RFH53105

木纹系列 49
RFH53106

Nosthesn Style

Variety of changes made with wood full of sensibility. Wood which never goes out of style is an element that matches every space. It is the most fundamental yet the most wide-ranged item. We invite you to the world of wood which always presents a new interpretation of the familiar grain, color and texture. A majestic tree now decorates your space.

The above image is for illustrational purpose only, and the real product may be different.

图片效果仅供参考，颜色请以实物为准



本纹系列 34
RFH53091



本纹系列 35
RFH53092



本纹系列 36
RFH53093



本纹系列 37
RFH53094



本纹系列 42
RFH53099



本纹系列 43
RFH53100



本纹系列 44
RFH53101



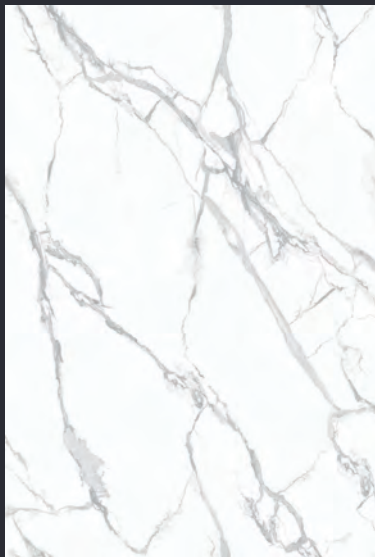
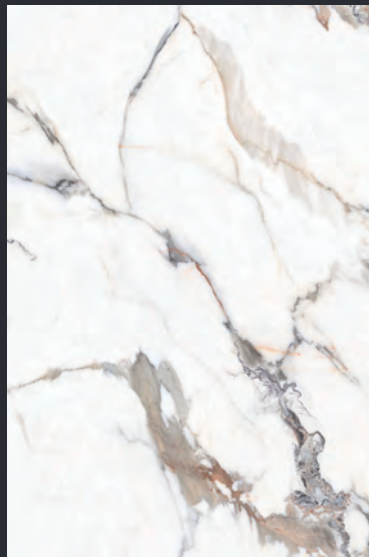
本纹系列 45
RFH53102

04 STONE GRAIN

石纹系列

空间线条简约，流畅
将装饰设计得元素简化

Design
Element
Simplification





The above image is for illustrational purpose only, and the real product may be different.

图片效果仅供参考，颜色请以实物为准



8224

8015-1

8042-1

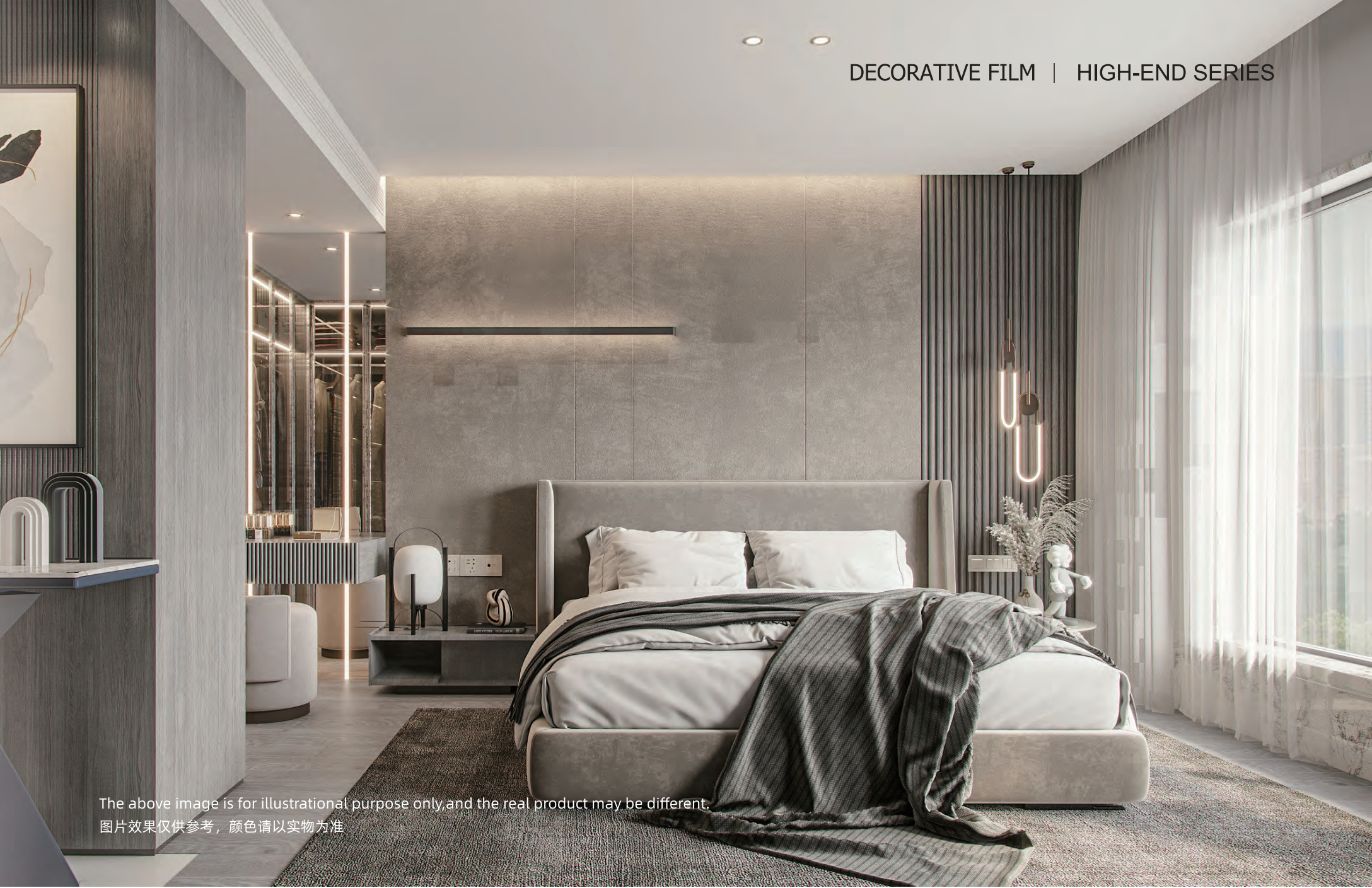
8224-1

8015-2

8055-1

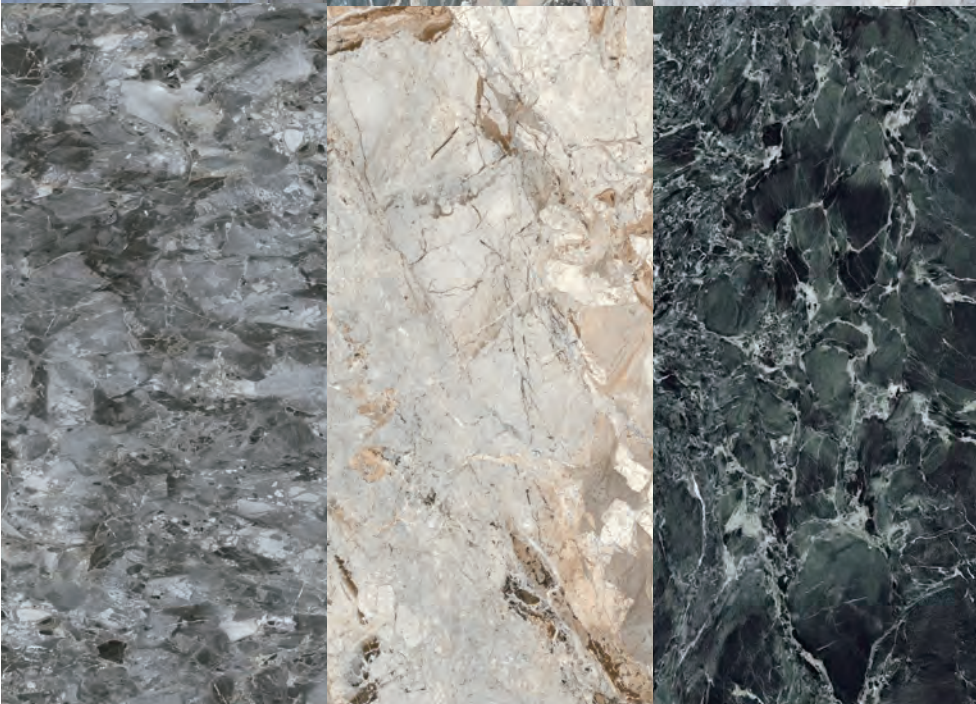
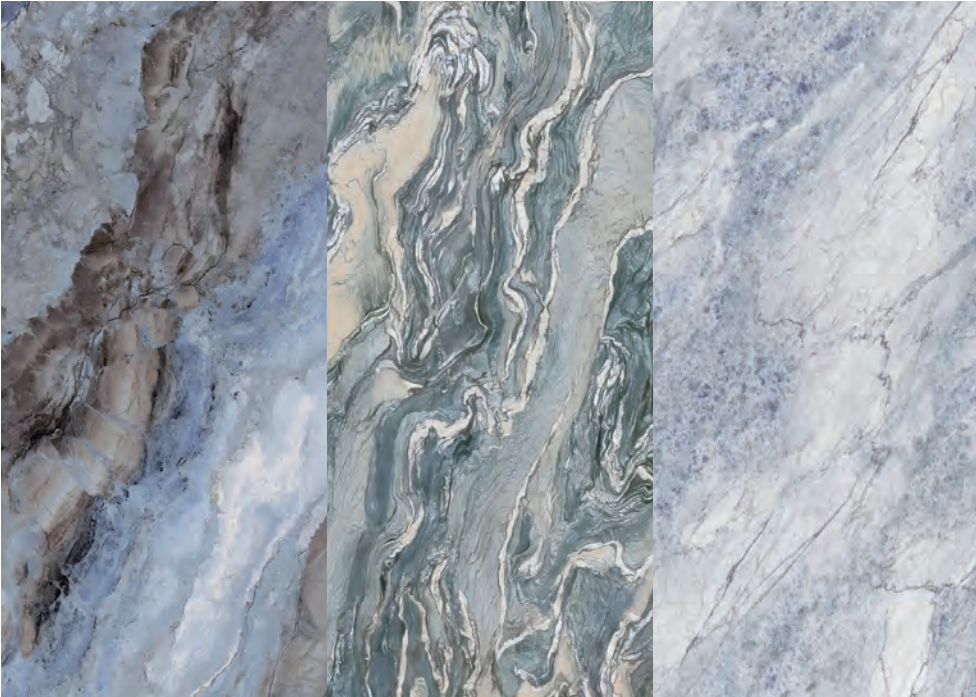


DECORATIVE FILM | HIGH-END SERIES



The above image is for illustrational purpose only, and the real product may be different.

图片效果仅供参考，颜色请以实物为准



定制四连纹-YN9174L



H

名称：定制四连纹-YN9174L
尺寸：宽1200高2440/2600/2800/3000 可定制高度
表面质感：高光/肤感

定制四连纹-伊丽莎白



H

名称：定制四连纹-伊丽莎白
尺寸：宽1200高2440/2600/2800/3000 可定制高度
表面质感：高光/肤感

左右无限连纹-YN9129L



H

名称：无限连纹-YN9129L
尺寸：宽1200高2440/2600/2800/3000 可定制高度
连纹说明：ABC为一套可相连
表面质感：高光/肤感

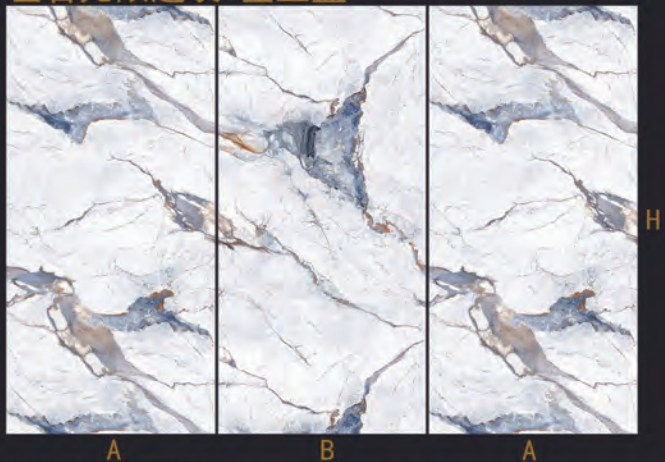
定制四连纹-YN9173LG



H

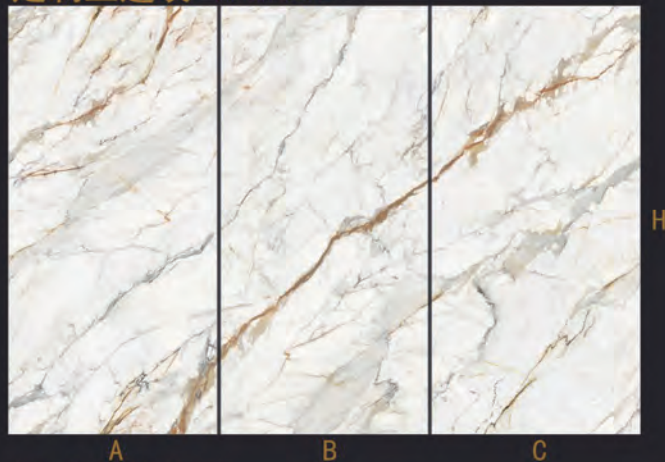
名称：定制四连纹-YN9173LG
尺寸：宽1200高2440/2600/2800/3000 可定制高度
表面质感：高光/肤感

左右无限连纹-金丝蓝



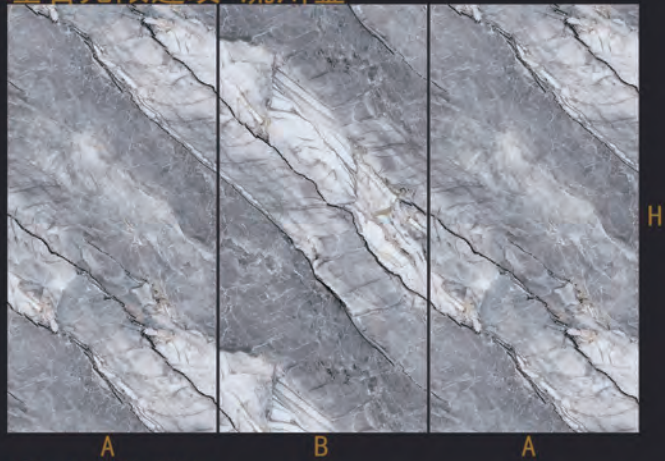
名称：无限连纹-金丝蓝
尺寸：宽1200高2440/2600/2800/3000 可定制高度
连纹说明：AB为一套可相连
表面质感：高光/肤感

定制三连纹-YN9230L



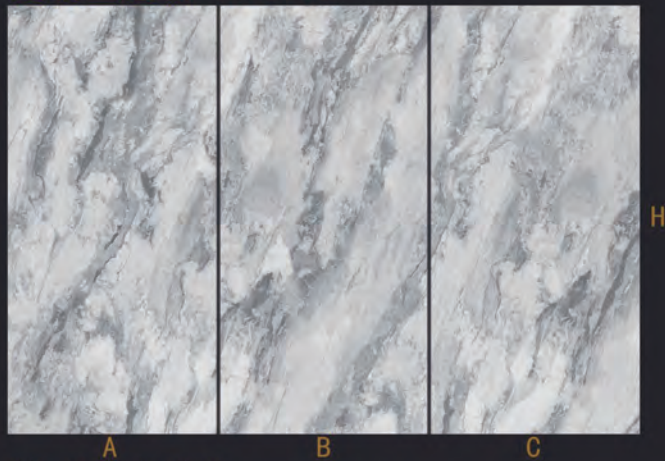
名称：定制三连纹-YN9230L
尺寸：宽1200高2440/2600/2800/3000 可定制高度
表面质感：高光/肤感

左右无限连纹-流川金



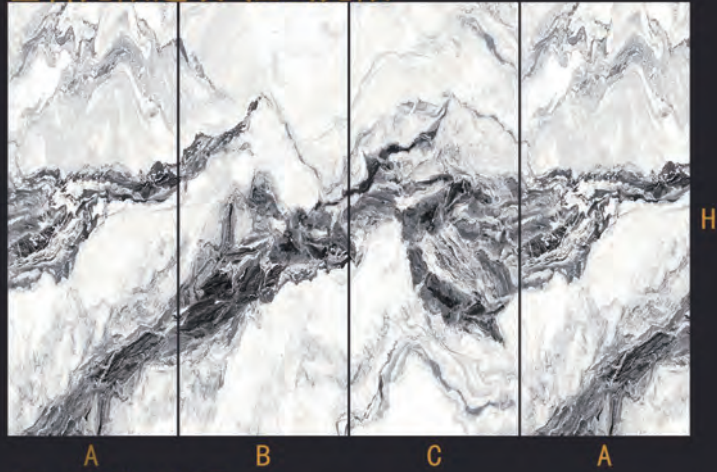
名称：无限连纹-流川金
尺寸：宽1200高2440/2600/2800/3000 可定制高度
连纹说明：AB为一套可相连
表面质感：高光/肤感

定制三连纹-YN9231L



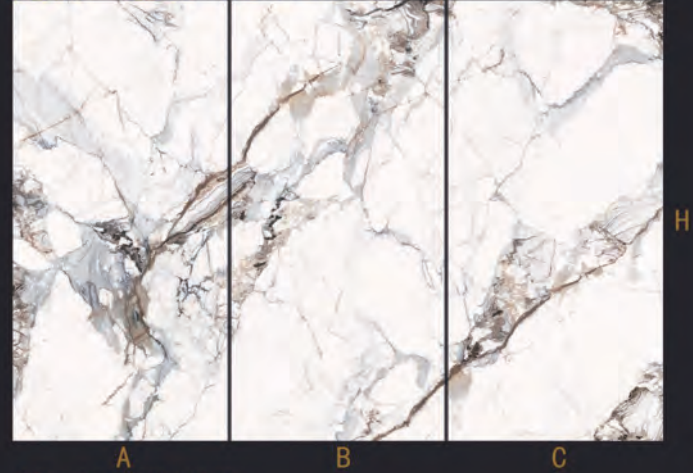
名称：定制三连纹-YN9231L
尺寸：宽1200高2440/2600/2800/3000 可定制高度
表面质感：高光/肤感

左右无限连纹-江山无限



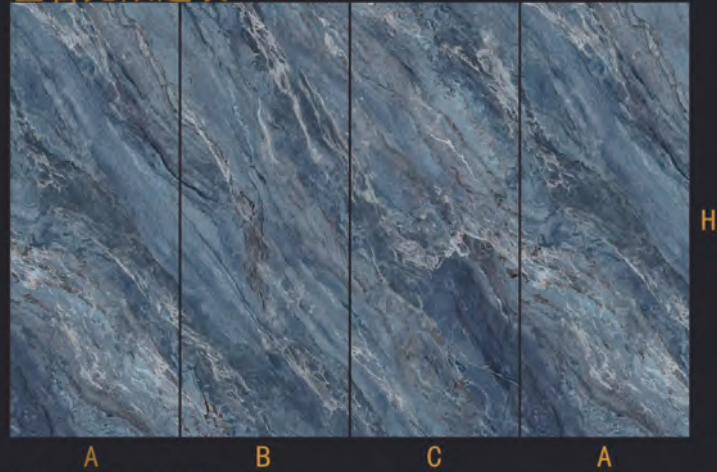
名称：无限连纹-江山无限
 尺寸：宽1200高2440/2600/2800/3000 可定制高度
 连纹说明：ABC为一套可相连
 表面质感：高光/肤感

定制三连纹-YN9172L (鎏金白)



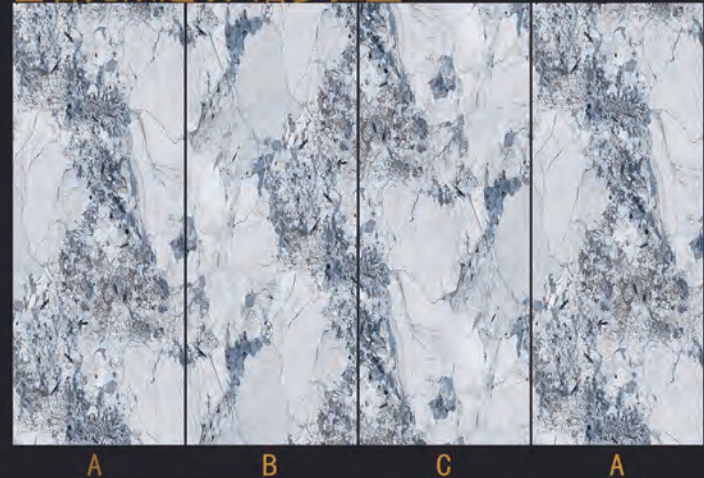
名称：定制三连纹-YN9172L
 尺寸：宽1200高2440/2600/2800/3000 可定制高度
 表面质感：高光/肤感

左右无限连纹-16032F



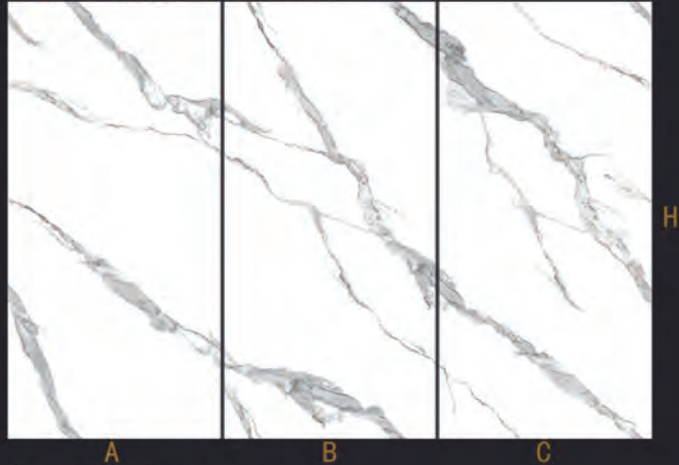
名称：无限连纹-16032F
 尺寸：宽1200高2440/2600/2800/3000 可定制高度
 连纹说明：ABC为一套可相连
 表面质感：高光/肤感

左右无限连纹-潘多拉蓝



名称：无限连纹-潘多拉蓝
 尺寸：宽1200高2440/2600/2800/3000 可定制高度
 连纹说明：ABC为一套可相连
 表面质感：高光/肤感

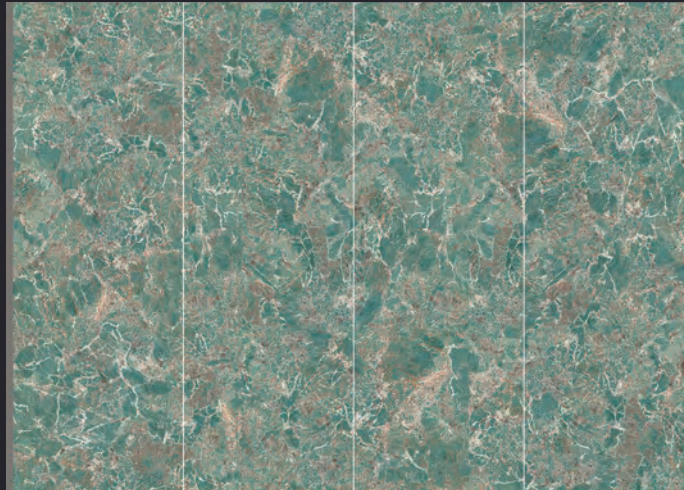
定制三连纹-YN9182G



名称：定制三连纹-YN9182G
尺寸：宽1200高2440/2600/2800/3000 可定制高度
表面质感：高光/肤感

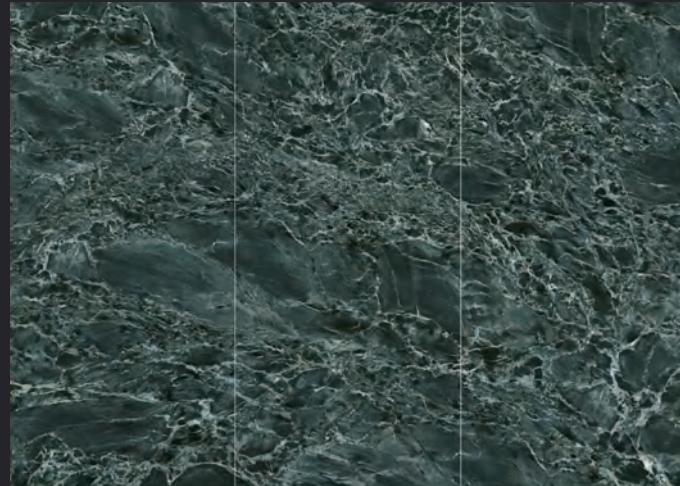
型号：YS160321-63 亚马逊绿

奢侈系列



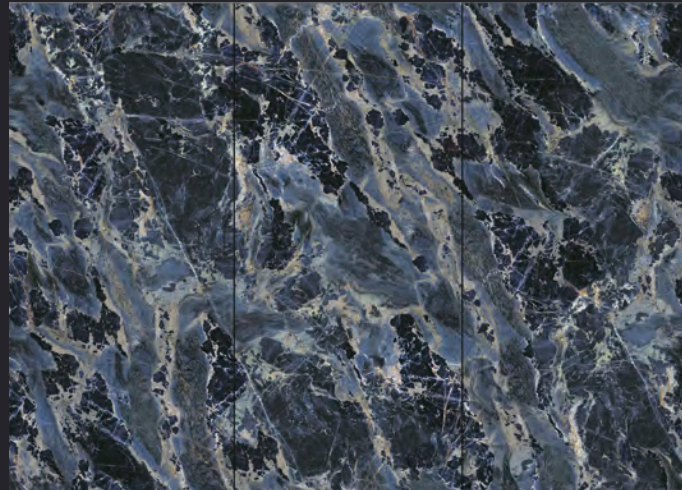
型号：意大利蛇纹绿

奢侈系列



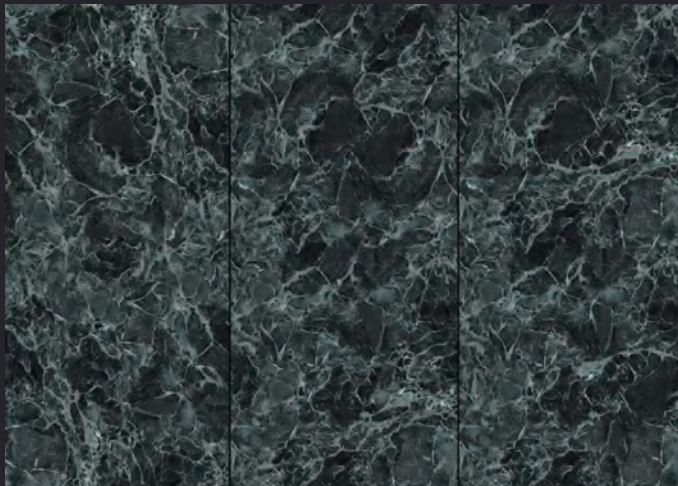
型号：1224YBL622景泰蓝

奢侈系列



型号：BJ1632630心海蓝

奢侈系列



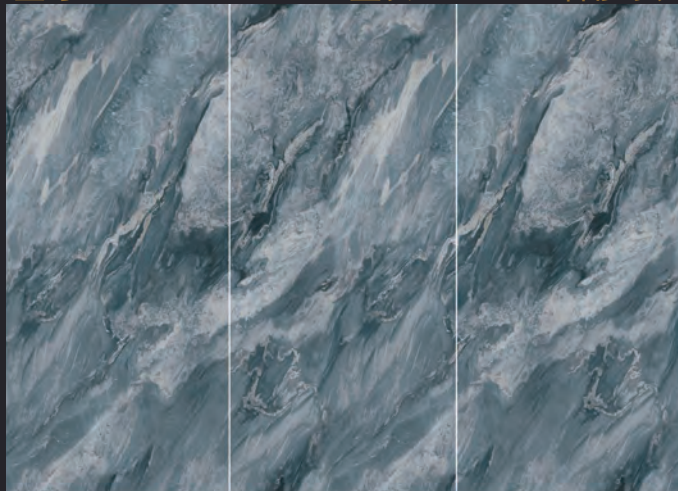
型号：BJ1632630心海蓝

奢侈系列



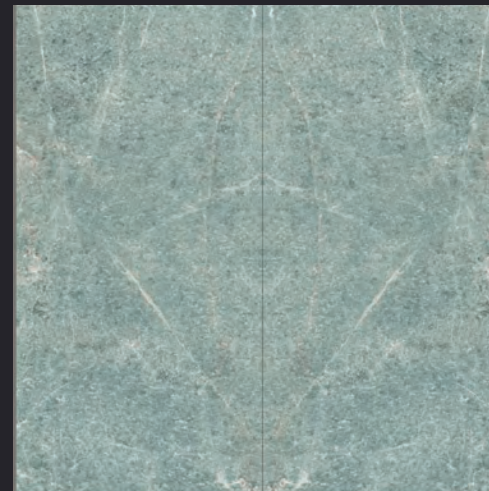
型号：YS6JL3216A31-宝蓝灰

奢侈系列



型号：BJS1227641蒂芙尼蓝

奢侈系列



05

Resistant to dirt and scratch

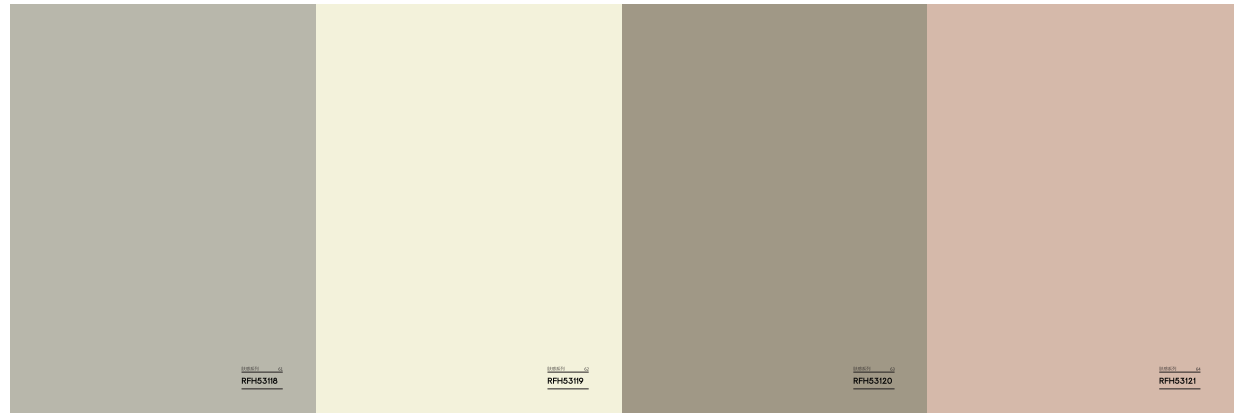
纯色（耐污耐刮）系列

作为打造简约家居得经典配色，带着与生俱来的艺术范，虽没有绚丽多彩的颜色，却能令人耳目一新，看一眼便爱上。

As a classic colour matching for creating a simple home, it has an inherent artistic style. Although it has no colourful colours, it can make people refreshing and fall in love at a glance.

SOLID COLOUR SERIES

The above image is for illustrational purpose only, and the real product may be different.
图片效果仅供参考，颜色请以实物为准



ALUMINIUM ALLOY LINES

配套线条



常规款·铝合金踢脚线

双层线槽走线 替代传统挖槽埋线



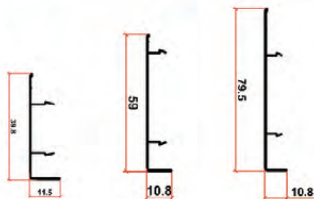
隐形走线 美观实用



产品参数

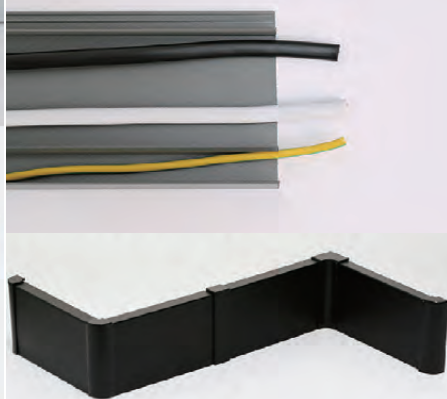
品牌	品名	铝合金踢脚线
质感	工艺	加厚6063-T5航空铝材
工艺	亮点	加厚用料色泽靓丽
产品颜色	高光白、绅士灰、香槟金、星空灰、星光咖、雅典灰、银烟灰、肌肤黑	
产品规格	明装平面 T0680-10	

尺寸参数·三种高度



隐形走线

双层走线槽 美观不留痕



精工细作·品质保障

做工好，品质硬，专注而专业

01 免胶安装 健康无甲醛

免除粘胶，靠螺丝固定更环保



02 阳极氧化 德国工艺

防刮耐摩擦/不褪色

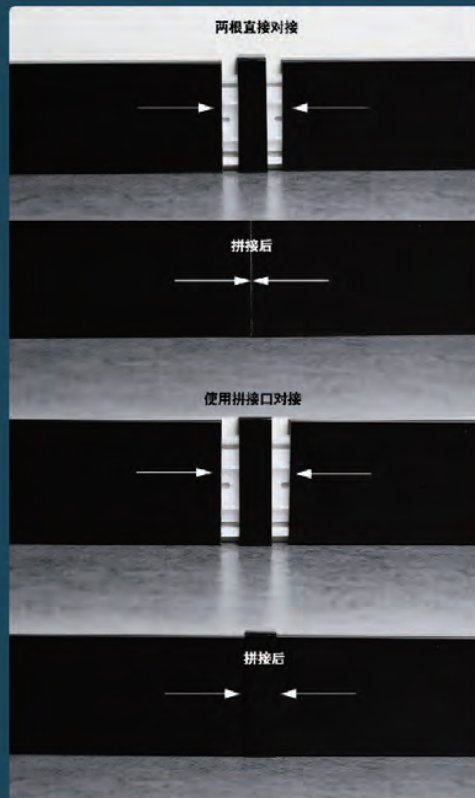
03 航空铝材 6063-T5材质

常用于汽车航空领域，硬度更高



无缝衔接 有中接口

避免切割不平整，有拼接扣可以遮住缝隙 做到真正无缝衔接

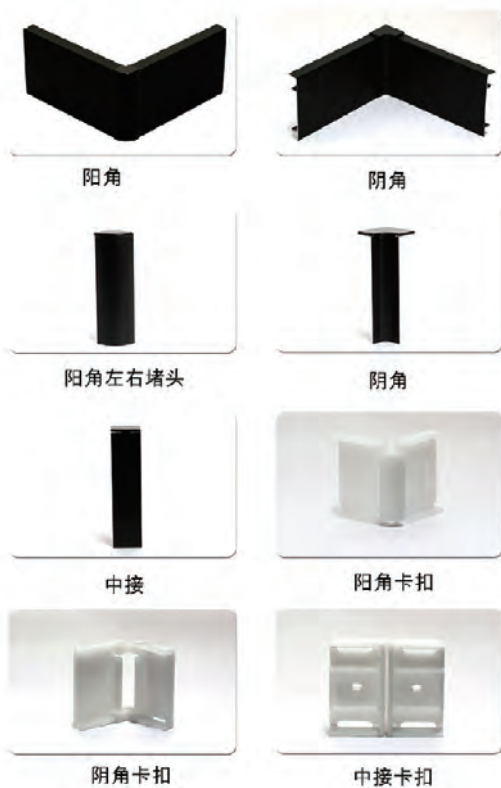


ALUMINIUM ALLOY LINES

配套线条



配件展示



【产品参数】

多种规格可选 满足多种场景装修风格

品牌	品名	直板灯带款踢脚线	
质感	细腻磨砂	工艺	6063-T5航空铝材
产品高度	50MM、80MM	亮点	用料色泽靓丽
产品颜色	肌肤黑、高光白、星光灰		
适用场所	大厅、走廊、卧室、办公室、厨房、厂房、酒店		

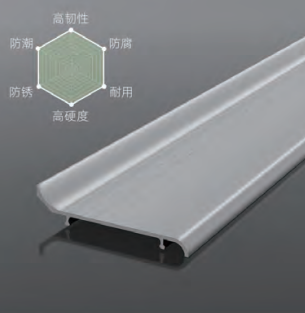
多种颜色 给您更多选择

轻奢、豪华、简约
多种风格色系供您选择



6063-T5 6系航空铝材

结合一体成型工艺而成



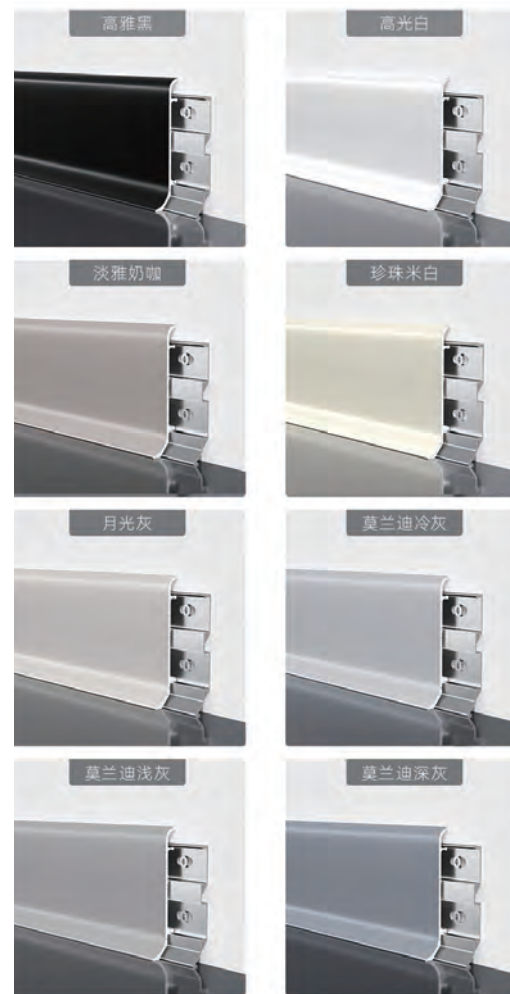
产品信息

品牌	规格	2.5米/根	
壁厚	1.5mm	工艺	阳极氧化
风格	轻奢现代简约	材质	6063-T5 6系航空铝材

尺寸参数

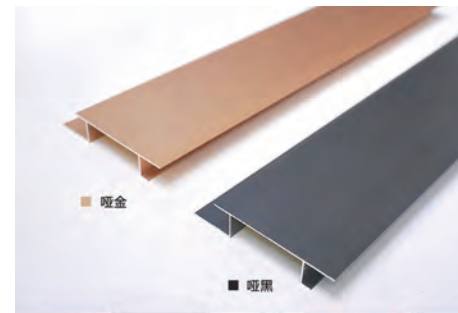
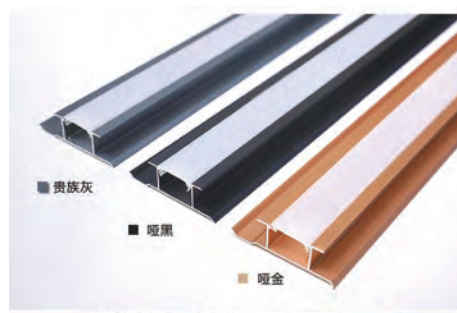
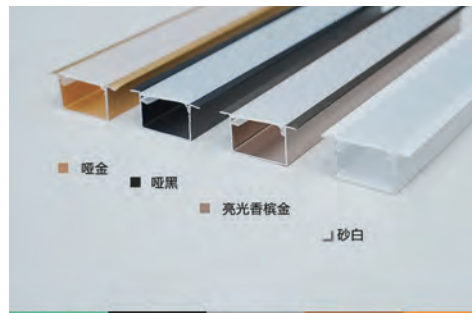
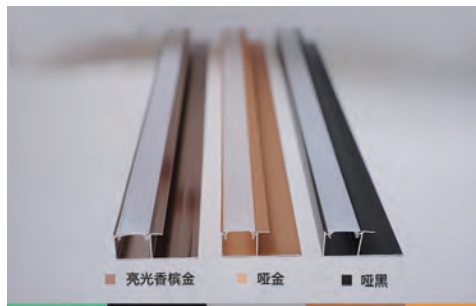


*纯手工测量可能存在10%的误差



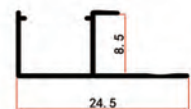
ALUMINIUM ALLOY LINES

配套线条

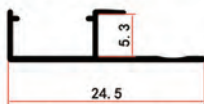


多种灯带工字尺寸

尺寸单位：毫米



8厘 灯带工字Z8610-D07

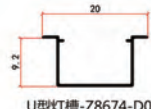


5厘 灯带工字Z5556-D07

另有其他型号
顶线 | 收边 | 踢脚

多种U型灯槽尺寸

尺寸单位：毫米



U型灯槽-Z8674-D08

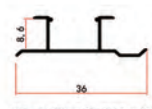


U型灯槽-Z5676-D08

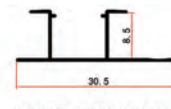
另有其他型号
收边 | 中缝 | 踢脚

多种灯带工字尺寸

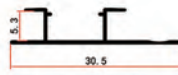
尺寸单位：毫米



8厘 灯带工字Z8610-D07



8厘 灯带工字Z8545-D07

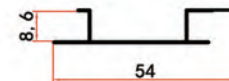


5厘 灯带工字Z5556-D07

另有其他型号
顶线 | 收边 | 踢脚

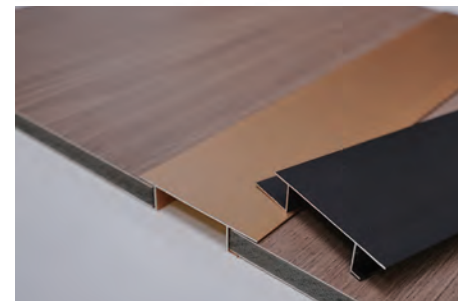
大腰线 尺寸

尺寸单位：毫米



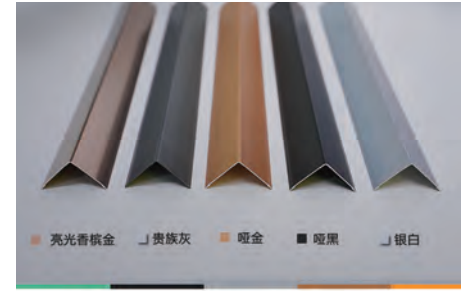
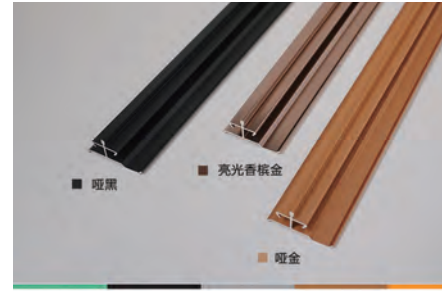
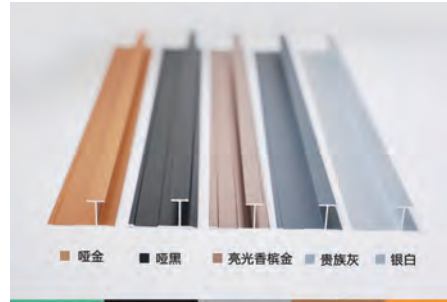
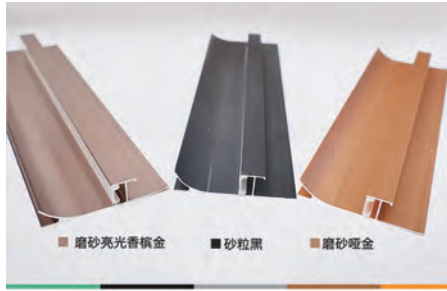
大腰线

另有其他型号
顶线 | 收边 | 踢脚



ALUMINIUM ALLOY LINES

配套线条



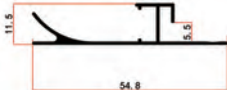
多种灯带踢脚线尺寸

尺寸单位：毫米



9厘板 灯带踢脚线

另有其他型号
顶角 | 中缝 | 收边



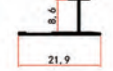
5厘板 灯带顶角收边

多种中缝线工字尺寸

尺寸单位：毫米



9厘板 工字Z9629-02



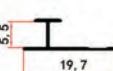
8厘板 工字Z8605-02



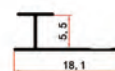
8厘板 工字Z8543-02



9厘板 工字Z9878-02



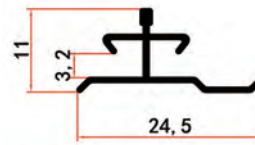
5厘板 工字Z5553-02



5厘板 工字Z5467-02

中缝线土字尺寸

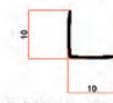
尺寸单位：毫米



另有其他型号
顶线 | 中缝 | 收边

多种直角收边线工字尺寸

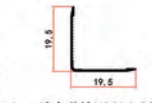
尺寸单位：毫米



直角收边Y0624-102



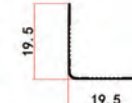
直角收边Y0625-1020



直角收边Y0614-20



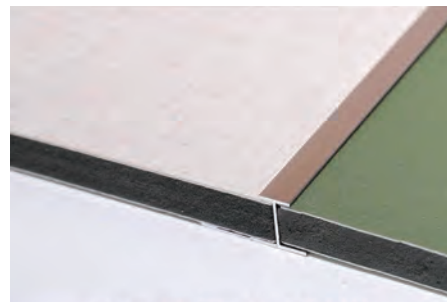
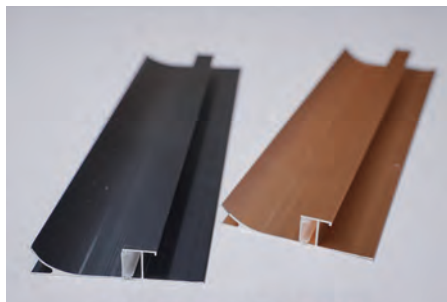
直角收边Y0615-30



直角收边Y0549-20

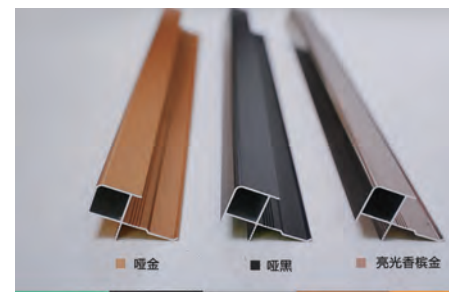
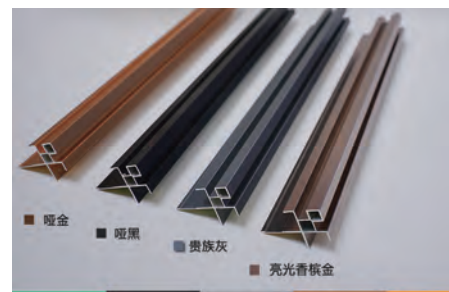
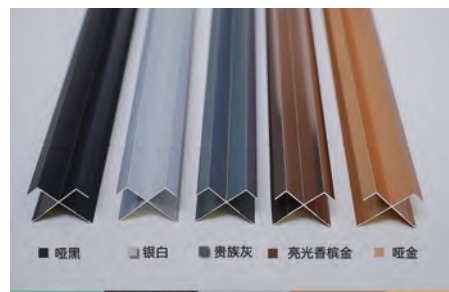
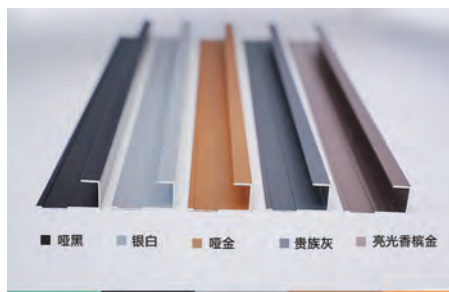


直角收边Y0571-15



ALUMINIUM ALLOY LINES

配套线条

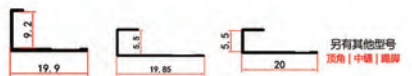


vv收边线尺寸

尺寸单位：毫米



9厘板 收边线S9633-01 8厘板 收边线S8611-01 8厘板 收边线S8546-01 8厘板 收边线S8465-01



9厘板 收边线S9880-01 5厘板 收边线S5468-01 5厘板 收边线S5557-01

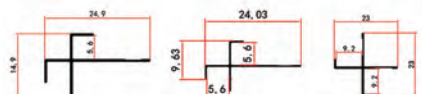
另有其他型号
顶角 | 中缝 | 踢脚

多种海棠阳角尺寸

尺寸单位：毫米



9厘 海棠阳角Y9638-05 8厘 海棠阳角Y8620-05 8厘 海棠阳角Y8552-05



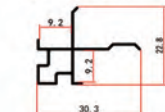
5厘 海棠阳角Y5563-05 5厘 海棠阳角Y5472-05 9厘 海棠阳角Y9885-05

多种双凹阳角尺寸

尺寸单位：毫米



8厘 双凹阳角Y8619-04



9厘 双凹阳角Y9884-04

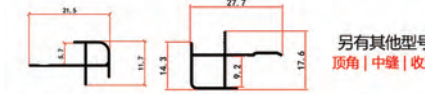
另有其他型号
顶线 | 收边 | 踢脚

多种方阳角尺寸

尺寸单位：毫米

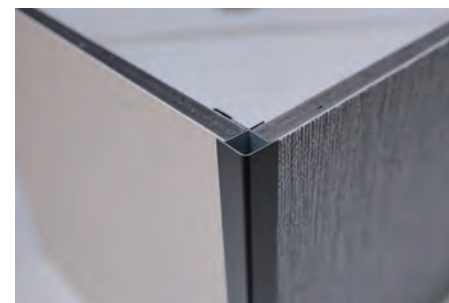
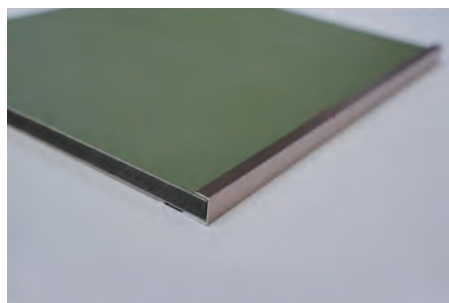


9厘 方阳角Y9637-03 8厘 方阳角Y8618-03 8厘 方阳角Y8551-03



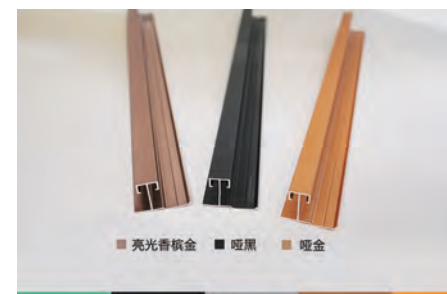
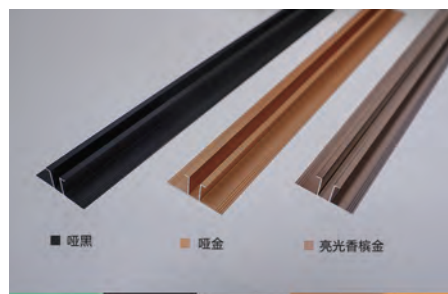
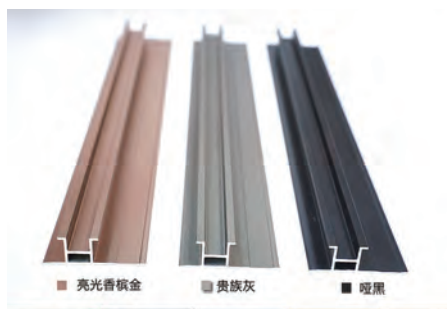
5厘 方阳角Y5562-03 9厘 方阳角Y9883-03

另有其他型号
顶角 | 中缝 | 收边



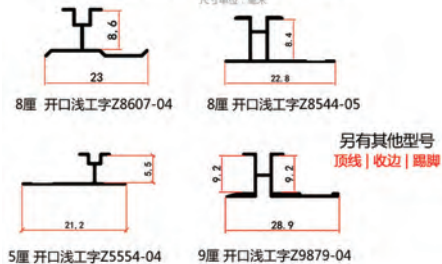
ALUMINIUM ALLOY LINES

配套线条



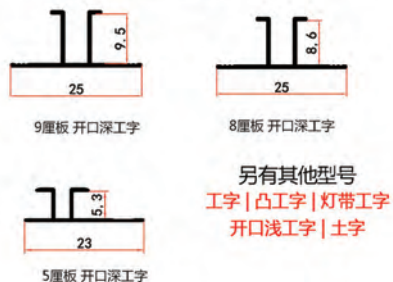
多种开口浅工字尺寸

尺寸单位：毫米



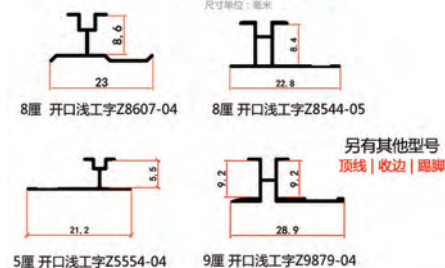
多种中缝线开口深工字尺寸

尺寸单位：毫米



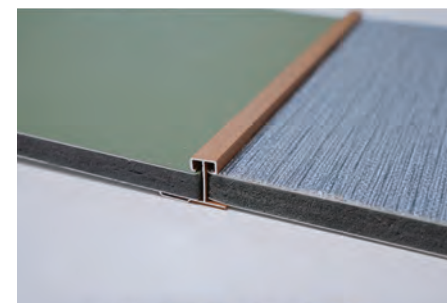
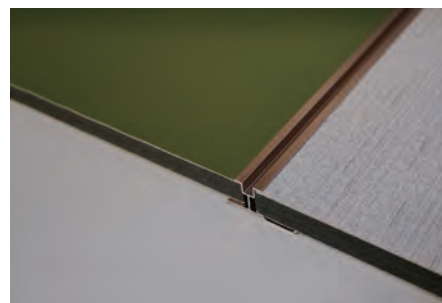
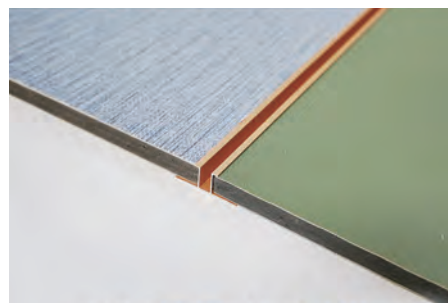
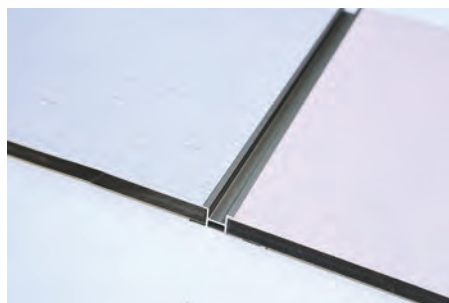
多种开口浅工字尺寸

尺寸单位：毫米



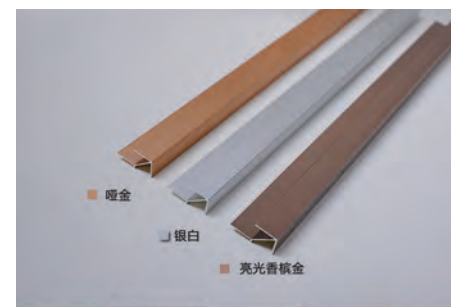
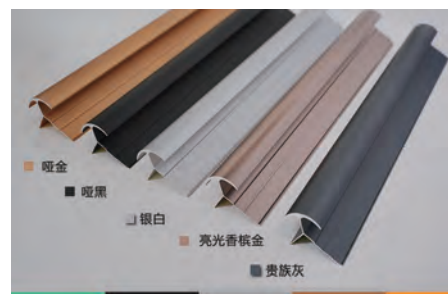
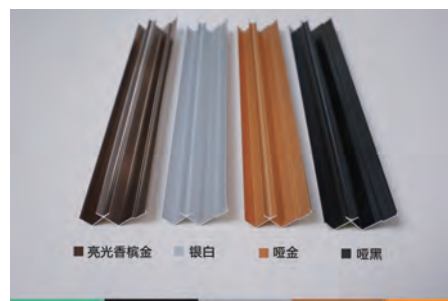
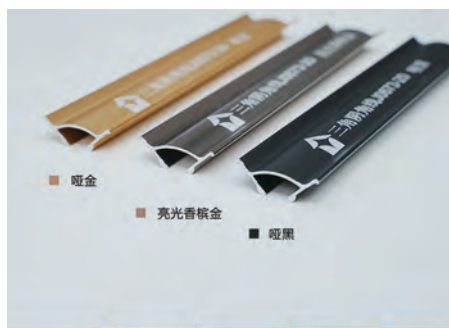
多种中缝线凸工字尺寸

尺寸单位：毫米



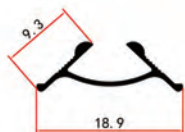
ALUMINIUM ALLOY LINES

配套线条



三角阴角线尺寸

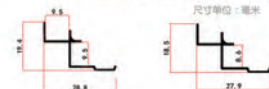
尺寸单位：毫米



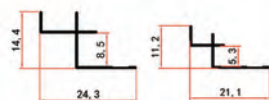
另有其他型号
收边 | 中缝 | 踢脚

多种W阴角线尺寸

尺寸单位：毫米



9厘板 W阴角J9634-01 8厘板 W阴角J8613-01



8厘板 W阴角J8548-01 5厘 W阴角J5559-01

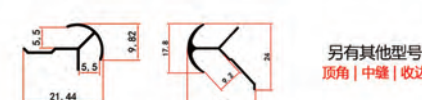
另有其他型号
阳角 | 收口 | 工字

多种尖阳角尺寸

尺寸单位：毫米



9厘 圆弧阳角Y9636-02 8厘 圆弧阳角Y8617-02 8厘 圆弧阳角Y8550-02

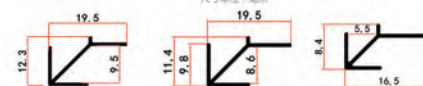


5厘 圆弧阳角Y5561-02 9厘 圆弧阳角Y9882-02

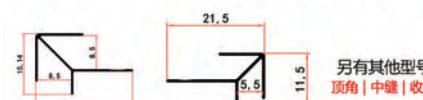
另有其他型号
顶角 | 中缝 | 收边

多种尖阳角尺寸

尺寸单位：毫米

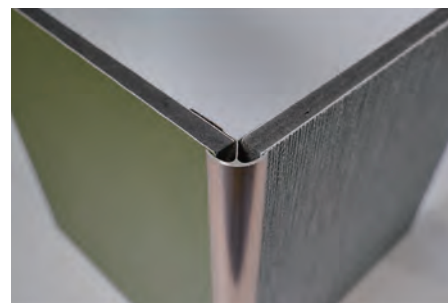
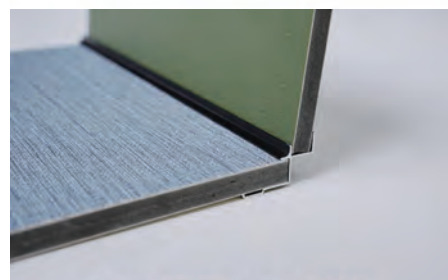


9厘 尖阳角Y9635-01 8厘 尖阳角Y8616-01 5厘 尖阳角Y5560-01



8厘 尖阳角Y8466-01 5厘 尖阳角Y5469-01

另有其他型号
顶角 | 中缝 | 收边



法国A+级碳晶板木饰面护墙板 婴儿、孕妇安心使用

Emissions in indoor air A+ Wall Panels

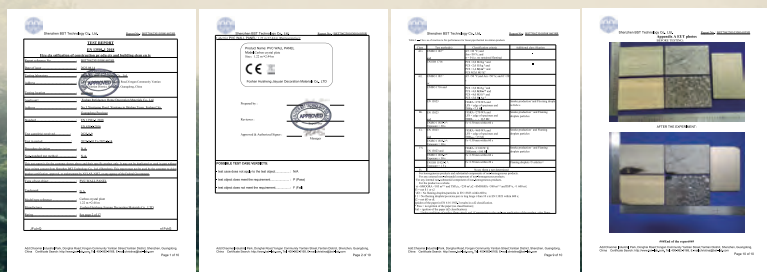
Baby and pregnant women are at ease to live.

Environmental Protection Grade

Emissions in indoor air A+ VOC $\leq 1g/m^2$



Report by CE **B1 Fire Rating**



A+是法国VOC标签中环保等级最高的标志

法国VOC标签是室内建筑进入法国市场强制使用的环保标签，是根据国际标准ISO-16000室内空气的技术规定。

它模拟人们实际居住的室内环境，通过专业精密仪器持续28天检测涂刷后空间内的空气质量，根据空气中总挥发性有机化合物的浓度及另外十种常见的对人体有危害的有机化合物浓度对产品评级。

标准: VOC $\leq 1g/m^2$

安装步骤 INSTALLATION

1 STEP
The flatness of the construction wall must be within +5



2 STEP
Measuring cutting



3 STEP
Using neutral waterproof structural adhesive on dispensing shape



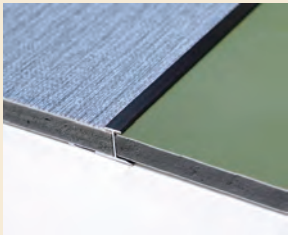
4 STEP
Paste on the wall



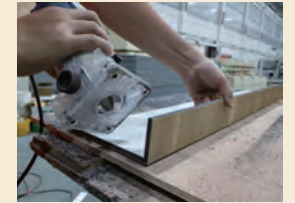
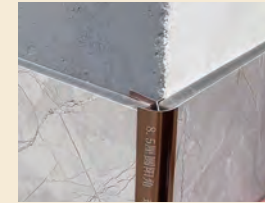
5 STEP
Install edge trim, put gun nail onto the edge trim, and paste another panel



6 STEP
connecting way:
1: using the aluminium alloy accessories
2: slotted in factory to making panels joint seamlessly 3: using beauty seam



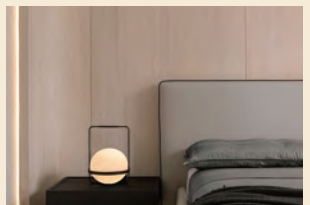
7 STEP
Construction instructions for wall outside and inside corners :
method 1: use a trimmer on the back of the wall panel. Slotting corresponding to the position of the internal and external corners .Squeeze structural adhesive into the slot.
method 2: use the aluminium accessories



8 STEP
Fixing method in case of lack of leveler. Nail the wood chips on the seams between the wall panels for 12 hours, after the structural adhesive is completely solidified.



9 STEP
Two ways of making arc : A: using heat gun about 400 degrees to heat back of the panel B: use electric planer for wood working , cut off 70% of the area you need to bend.



工厂实拍 FACTORY VIEW

